

Baxter



**ALLEN
MEDICAL
PATIENT
POSITIONING
ACCESSORIES**

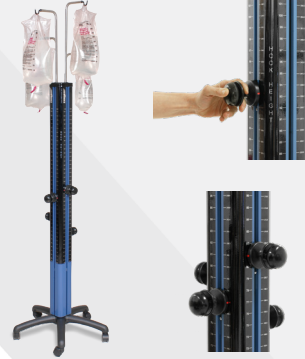
GENERAL ACCESSORIES

CONTENT

GENERAL ACCESSORIES	3
GYN / URO / LAP	21
ORTHOPEDICS	29
SPINE	39



ALLEN EASY IRRIGATION TOWER # 0-LPA



Four independently adjustable hooks each support up to 10,000cc of fluid. Quick-release knobs permit vertical adjustment of hangers from 5.5' to 8.5' (1.67 m to 2.59 m). Spring-loaded elliptical knob unlocks when squeezed and locks securely in place when released. The **Lift-Assist** articulation is done mechanically; there are no hydraulics or batteries to fail. The hanger height is displayed in inches and centimeters for your convenience.

PATIENT TRANSFER BOARD # A-83005, # A-83000, # A-83001



A-83005 Transfer Board, Long, Narrow

71.5" x 16.5" (180 cm x 42 cm)

A-83000 Transfer Board, Long, Wide

71.5" x 20.5" (180 cm x 52 cm)

A-83001 Transfer Board, Short, Narrow

40" x 16.5" (100 cm x 42 cm)

Long board folds for storage and set-up.

Optional Accessory: A-83002 Allen Transfer Board Disposable Cover

FLEXIBLE ANESTHESIA SCREEN # 0-FAS



Flexible shape allows for screen to be configured to any needed shape. Plastic encased metal allows screen to hold its position. Connects to siderails via 5/8" (1.6cm) post.

Requires: 2x Easy Lock Socket

ANESTHESIA SCREEN WITH WINGS # 0-ASLW



Adjusts vertically from 22" to 30" (56 cm to 76 cm) and rotates horizontally. Folds flat for easy storage. The .625" (1.6 cm) mounting post fits standard clamps. Adjustable drape support wings pivot in all planes and lock with a twist.

Requires: Easy Lock Socket

HEAD POSITIONER, ICU PRONE # 216054



The ICU Prone Head Positioner is a head positioning system that is used as an attachment to hospital beds to support the patient's head in a variety of surgical or ICU procedures.

Requires: **# P009426-A ICU Prone Face Cushions**

Sold in Cases of 5.

ALLEN ACCESSORY CART # A-30010, A-30010E, A-30010JP



The Accessory Cart provides convenient storage for most of your surgical table accessories. Six rails and a deep bin afford additional storing space.

Specify Rail Type:

A-30010 Accessory Cart w/2 Hooks

A-30010E Accessory Cart (EURO) w/2 Hooks

A-30010JP Accessory Cart (JPN) w/2 Hooks

Including:

2x #A-30011 Accessory Hook

2x #A-30011E Accessory Hook (EURO)

2x #A-30011J Accessory Hook (JPN)



EASY RACK # 0-MR2



The Easy Rack provides convenient storage for various table accessories. Requires appropriate wall fasteners (not included). Side rail dimensions: 1.12 in x 0.38 in (28.6 mm x 9.5 mm) (US specific)

EASY LOCK SOCKET

A-40022, # A-40023, # A-40024, # A-40025, # A-40030



Attaches to the operating table rail. Accepts any round post up to 11/16" or 1.8 cm diameter.

Specify Rail Type:

- # A-40022 Easy Lock Socket - US Rail
- # A-40023 Easy Lock Socket - European
- # A-40024 Easy Lock Socket - UK Rail
- # A-40025 Easy Lock Socket - Denyer Rail
- # A-40030 Easy Lock Socket - Japanese 9X32mm

EASY LOCK BLADE CLAMP

A-40040, # A-40041, # A-40043



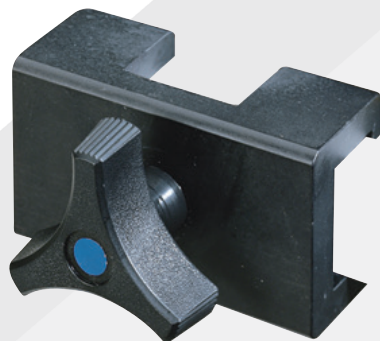
Attaches to the operating table rail. Accepts all 1" x 1/4" (2.5 cm x 0.6 cm) accessories with flat mounting blades.

Specify Rail Type:

- # A-40040 Easy Lock Blade Clamp US Rail
- # A-40041 Easy Lock Blade Clamp - Euro
- # A-40043 Easy Lock Blade Clamp - Japan 9x32mm Rail

RAIL CLAMP

O-RC2, # O-RC29X32MM, # O-RC2XD, # F-RC2XUK



Attaches to the operating table rail. Accepts 1" x 1/4" (2.5 cm x 0.6 cm) flat accessories.

Specify Rail Type:

- # O-RC2 Rail Clamp
- # O-RC29X32MM Allen Rail Clamp, Japanese Rail
- # O-RC2XD Rail Clamp - Denyer
- # F-RC2XUK Accessory Clamp UK/Euro

ALLEN SIMPLE CLAMP

A-40018, # A-40018-UK



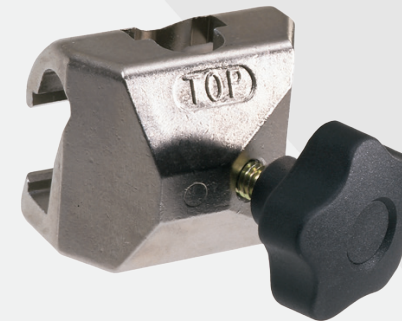
Attaches to the operating table rail. Holds all .5" to .625" (1.3 cm to 1.6 cm) diameter accessories.

Specify Rail Type:

- # A-40018 Allen Simple Clamp (US/EUR)
- # A-40018-UK Allen Simple Clamp-UK RAILS

UNIVERSAL ACCESSORY RAIL CLAMP

A-40015



Attaches to the operating table rail. Accepts .5" to .625" (1.3 cm to 1.6 cm) table accessories with round posts as well as blade-type posts 1" x .25" (2.5 cm x 0.6 cm).

Fits US Rails Only.

Not recommended for use with stirrups.

ALLEN TRI-CLAMP - US RAIL

A-40016



Attaches to the operating table rail. Accepts .5" to .625" (1.3 cm to 1.6 cm) round and 1" x .25" (2.5 cm x 0.6 cm) flat accessories.

Fits US Rails Only.

MULTI-TASK ARMBOARD # 0-ABMT



Provides arm support for various positions.

Requires:

Easy Lock Socket

0-AMA97X1.0S Clamshell Armboard Pad, 1" (2.5cm) OR

0-AMA12X1.0S MULTI TASK 3, 1" PAD



EASY ARMBOARD LIFT TO POSITION # 0-ABSL, # 0-ABSLE, # F-ABSLUK



Lift the end of the board and rotate to the desired position. The patient's arm weight locks the board in place when lowered. A spring lever locks the armboard to the rail.

Specify Rail Type:

0-ABSL Easy Armboard Lift To Position

0-ABSLE Easy Armboard Lift To Position, EURO

F-ABSLUK Armboard, Snaplock, UK rail

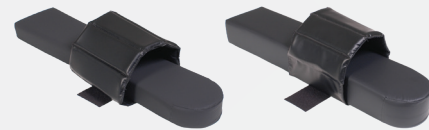
Requires:

0-AMA96X2.0S Clamshell

Armboard Pad, 2" (5cm) OR

0-AMA96X3.0S Clamshell

Armboard Pad, 3" (7.6cm)



ARMBRD SNAPLOCK, TRIGGER, WITH PAD, 4 1/4 # 111893



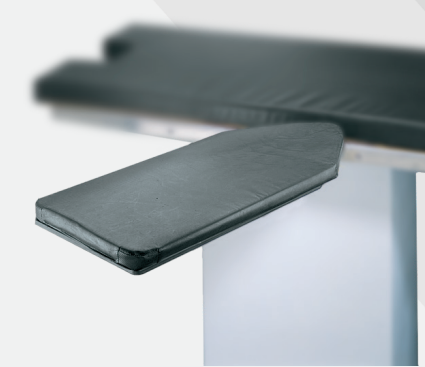
With the trigger design, simply pull the radiolucent release mechanism for full articulation and release it to lock. A spring lever accessible from both sides securely locks the armboard to the rail.

Replacement Pad Options:

0-AMA96X2.0S Clamshell Armboard Pad, 2" (5cm)

0-AMA96X3.0S Clamshell Armboard Pad, 3" (7.6cm)

EXTRA WIDE ARMBOARD W/ 2" PAD # 0-ABSLW

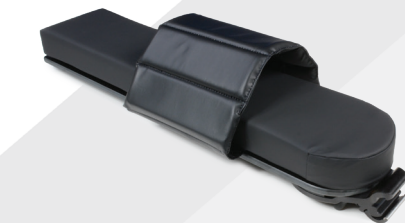


Lift the end of the board and rotate to the desired position. The patient's arm weight locks the board in place when lowered. A spring lever locks the armboard to the rail. Fits US rails only.

Replacement Pad:

0-AMA10X2.0S Replacement Armboard Pad, Wide ,2" (5 cm)

EASY ARMBOARD WITH SNAPLOCK,TRIGGER # 0-ABSLT, # 0-ABSLTE, # 0-ABSLTJP



With the trigger design, simply pull the radiolucent release mechanism for full articulation and release it to lock. A spring lever accessible from both sides securely locks the armboard to the rail.

Specify Rail Type:

0-ABSLT Easy Armboard with Snaplock,Trigger

0-ABSLTE EASY ARMBOARD w/SNAPLOCK TRIGGER

0-ABSLTJP Easy Armboard w/ Snaplock,Trigger (JPNese)

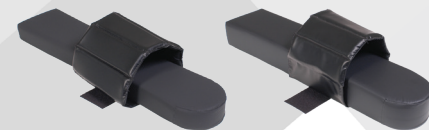
Requires:

0-AMA96X2.0S Clamshell

Armboard Pad, 2" (5cm) OR

0-AMA96X3.0S Clamshell

Armboard Pad, 3" (7.6cm)



LPS ARM SUPPORT # A-90002



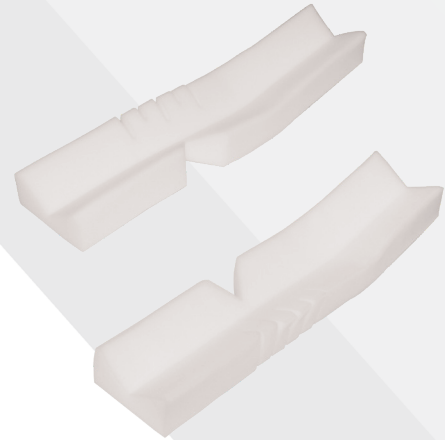
Provides arm support for various positions.

Replacement Pad: #A-AMA74 Pad, AB, Lateral Prone

Requires: Easy Lock Socket



ALLEN FOAM ARM SUPPORTS # A-70863



Provides arm support for prone positions. Single use.
Sold in Cases of 6.

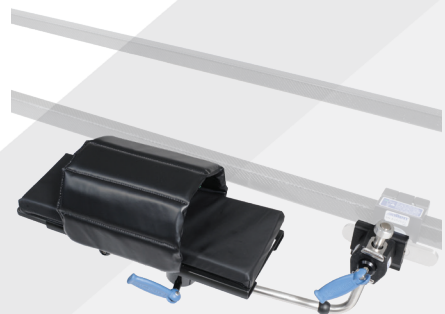
ALLEN PRONE ARM SUPPORT # A-70610



Provides arm support for various positions.
Replacement Pad: #A-AMA74 Pad, AB, Lateral Prone
Requires: Easy Lock Socket



ALLEN ADVANCED ARM SUPPORT # A-70615-EU, # A-70615-US, # A-70615-JP, # A-70615-UK



Provides arm support for various positions.
Replacement Pad: #O-AMA97X1.0S Clamshell Armboard Pad, 1" (2.5cm)
Specify Rail Type:
A-70615-EU Allen Advanced Arm Support - EU
A-70615-JP Allen Advanced Arm Support - Japan
A-70615-UK Allen Advanced Arm Support - UK
A-70615-US Allen Advanced Arm Support - US

ARM SHIELD # O-AS



Slides under OR Table pad to protect arms and keep them from falling off table.
Replacement Pad: # O-AMA53X0.6S Reusable Pad, Arm Shield

ADJUSTABLE WIDTH FOOTBOARD # O-AFB



Adjustable width accommodates outside rail dimensions of 21" to 23.25" (53 cm to 59 cm). Mounts to the foot section side rails of a standard OR table.
Replacement Pad: #O-AMA122X2.0R Replacement Pad Adj Width Footboard
Requires: Rail Clamp

SHOULDER SUPPORTS W/PADS # A-63500



Used for procedures requiring the Trendelenburg position.

Replacement Pad: # A-63500PAD Allen Shoulder Support Pads

Requires: 2x Easy Lock Blade Clamp



ALLEN STEEP TREND SECONDARY SUPPORTS # A-63600



Sold in Pairs.

Requires: 2x Easy Lock Blade Clamp

LATERAL BRACES # O-UPBL3S, # O-UPBLR, # O-UPBLC



Used to position the patient on OR tables.

Sold as a set or separately:

O-UPBL3S LATERAL BRACES, 3 PIECE SET

O-UPBLC Single Circular Lateral Brace

O-UPBLR Single Rect. Lateral Brace

The set consists of 2x #O-UPBLR and 1x O-UPBLC.

Requires: 3x Easy Lock Blade Clamps

HUG-U-VAC STEEP TREND POSITIONER # A-60001, # A-60005



A-60001 Hug-U-Vac Steep Trend Positioner

Device Dimensions: 46" x 42" (116.8 cm x 106.7 cm)

Requires: **# A-60101 Steep Trend Hug-U-Vac Disposable**

A-60005 Hug-U-Vac Large Steep Trend Positioner

Device Dimensions: 51" x 54" (129.5 cm x 137.1 cm)

Requires: **# A-60105 Large Steep Trend Hug-U-Vac Disposable**



HUG-U-VAC LATERAL POSITIONER # A-60002, # A-60003



A-60002 Hug-U-Vac Large Lateral Positioner

Device Dimensions: 48" x 35" (121.9 cm x 88.9 cm)

Requires: **# A-60102 Hug-U-Vac Large Lateral Disposable**

A-60003 Hug-U-Vac Standard Lateral Positioner

Device Dimensions: 36" x 32" (91.4 cm x 81.3 cm)

Requires: **# A-60103 Hug-U-Vac Standard Lateral Disposable**



DELUXE PATIENT RESTRAINT STRAP # 0-PRSLH, # 0-RSX2



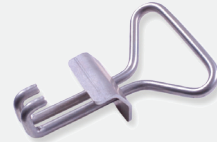
Loops around the side rail and adjusts with buckles.

0-PRSLH Deluxe Patient Restraint Strap:

Padded center section is .5" (1.3 cm) thick, 5" (12.7 cm) wide, 18" (46 cm) long. Strap is adjustable from 18" to 45" (46 cm to 114 cm).

0-RSX2 Deluxe Maximum Restraint Strap:

Padded center section is .5" (1.3 cm) thick, 6" (15.2 cm) wide, 24" (61 cm) long. Strap is adjustable from 24" to 80" (61 cm to 203 cm).



Optional: # 0-PRSH Patient Security Strap Hooks [P/N 59008]

NISSEN THIGH STRAP # 0-NTS, # F-NTSE



Used to secure patients from sliding during steep reverse Trendelenburg procedures. Sold in Pairs.

Specify Rail Type:

- # 0-NTS Nissen Thigh Strap
- # F-NTSE Nissen Strap (Euro)

BARIAT NISSEN STRAPS # A-80400, # A-80400UK



Used to secure patients from sliding during steep reverse Trendelenburg procedures. Sold in Pairs.

Specify Rail Type:

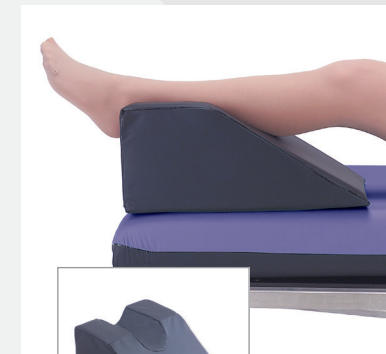
- # A-80400 Bariat Nissen Straps / Thigh Retractor, US
- # A-80400UK Bariatric Nissen Straps/Thigh Retractor, UK

FROGGER PAD # H-009-00-100



To position the patient's legs.

EXTREMITY POSITIONER FOAM COVERED # H-009-00-110



The Extremity Positioner can be used for prepping extremity surgical sites or for positioning the leg for foot and ankle procedures.

FOAM WELL LEG HOLDER # H-009-00-120



The Foam Well-Leg Holder supports the non-affected, well-leg during arthroscopic knee procedures, fracture repairs and cast procedures.

TABLE WIDTH EXTENDER # O-TWE, # O-TWEE, # O-TWEUK



Increases the support surface for larger patients. Clips with integral locking mechanism to the rail. Can be used individually or in multiples to create a custom platform. Support surface measures 4" x 20" (10 cm x 51 cm). Includes side rail for other accessories.

Specify Rail Type:

- # O-TWE Table Width Extender, No Pad, US Rail
- # O-TWEE Table Width Extender, No Pad, EU Rail
- # O-TWEUK Table Width Extender, No Pad, UK Rail

Requires: 1 of the following pads

- # O-AMA34X1.0S Tbl Width Ext Pad, Soft Care, 1 - 1" (2.5 cm)
- # O-AMA34X2.0S Tbl Width Ext PAD, Soft Care, 2 - 2" (5 cm)
- # O-AMA34X3.0S Tbl Width Ext PAD, Soft Care, 3 - 3" (7.6 cm)
- # O-AMA34X4.0S Tbl Width Ext Pad, Soft Care, 4 - 4" (10 cm)

COMFORT MAT # O-CM



Dimensions (L x W): 20" x 33" (51 cm x 84 cm)
Not available in custom sizes.

NEEDLE TRIEVER # A-75000

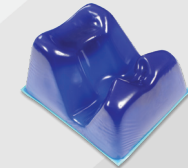


This suture needle retrieval system has a magnetic surface to pick up ferrous needles and sharps.

GEL PADS FOR HEAD POSITIONING



A-10031 Adult Head Gel Donut 2" x 3" x 8" O.D.
Dimensions: 8" Outer Diameter x 2" (200 x 45 mm)
Sold individually.

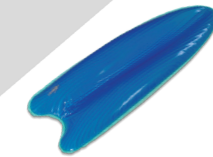


A-10038 Prn Head Positnr-Lrg, 11x 9 1/2x 5 1/2
Dimensions: 11" x 9.5" x 5.5" (280 x 240 x 140 mm)
Sold individually.

ARM BOARD GEL PADS



A-10032 Large Armboard Gel Pad 3/8" x 5" x 24"
Dimensions: 23.625" x 5" x .375" (600 x 125 x 10 mm)
Sold individually.

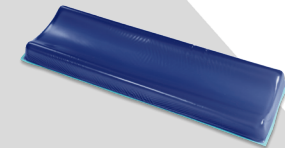


A-10037 Prem Armbrd Gel Pad-Lng, 18 1/2x 7 1/2
Dimensions: 18.5" x 7" x 1.5" (460 x 180 x 35 mm)
Sold individually.

KNEE GEL PADS

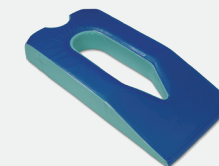


A-10029 Toboggan / Med. Knee Crutch Gel Pad
Dimensions: 15.5" x 10" x .375" (395 x 245 x 10 mm)
Sold in Pairs.

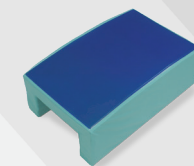


A-10040 Prone Knee Pad-Long, 20 1/2x 6x 1 1/2
Dimensions: 20.5" x 6" x 1.5" (510 x 150 x 35 mm)
Sold individually.

POSITIONERS

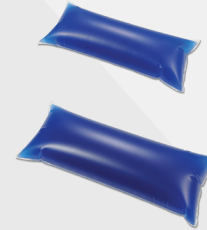


A-10044 Prn Gel Positioner, 44 1/2x 21x 5 1/2
Dimensions: 44.5" x 21" x 5.5" (1115 x 520 x 140 mm)
Sold individually.

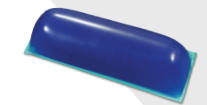


A-10042 Allen Lateral Leg Positioner, 26x 16x 9
Dimensions: 26" x 16" x 9" (650 x 400 x 230 mm)
Sold individually.

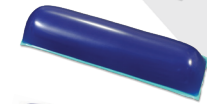
POSITIONERS



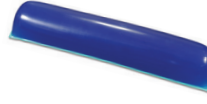
A-10073 Small "sandbag" Gel Positioner 2x5x12
Dimensions: 12" x 4.75" x 2.375" (300 x 120 x 60 mm)



A-10074 Large "sandbag" Gel Positioner 3x5x14
Dimensions: 14" x 5" x 2.75" (360 x 125 x 70 mm)
Sold individually.



A-10076 Chest Roll Gel Positioner 12" x 4" x 3"
Dimensions: 12" x 4" x 3" (305 x 100 x 75 mm)



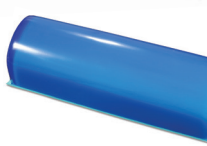
A-10078 Chest Roll Gel Positioner 16" x 4" x 3"
Dimensions: 16" x 4" x 3" (405 x 100 x 75 mm)



A-10080 Chest Roll Gel Positioner 20" x 4" x 3"
Dimensions: 20" x 4" x 3" (510 x 100 x 75 mm)
Sold individually.



A-10097 Chest Roll Gel Positioner w/Foam Core 16x6x6
Dimensions: 16" x 6" x 6" (405 x 150 x 150 mm)



A-10098 Chest Roll Gel Positioner w/Foam Core 20x6x6
Dimensions: 20" x 6" x 6" (510 x 150 x 150 mm)
Sold individually.

OVERLAY TABLE GEL PADS



A-10034T Torso Sect Gel Pad [cutout] 3/8
Dimensions: 39" x 20" x .375" (990 x 500 x 10 mm)
Sold individually.

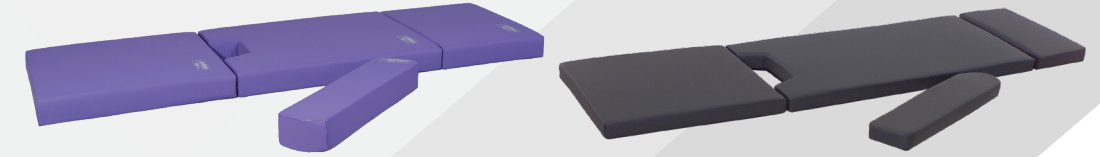


A-10060 3/4 Length Table Gel Pad 3/8 x 20 x 45
Dimensions: 45.25" x 20.5" x .375" (1150 x 520 x 10 mm)
Sold individually.

A-10061 Full Length Table Gel Pad 3/8 x 20 x 71
Dimensions: 71" x 20.5" x .375" (1800 x 520 x 10 mm)
Sold individually.

OR TABLE PAD SETS

Choose OR Table Model and Pad Set



OR Table Manufacturer / Model Name	Astrus Elite OR Table Pad Sets 3" Pad (7.6 cm)	Astrus Elite OR Table Pad Sets 4" Pad (10 cm)	Standard OR Table Pad Sets 2" Pad (5 cm)	Deluxe OR Table Pad Sets 2" Pad (5 cm)
Skytron 5001, 6001, 6500, 6600	n/a	Astrus Elite 4", Skytron 6001, 6500 3pc set # H-403-05-130	n/a	n/a
Skytron 3500	Astrus Elite 3", Skytron 3500 3pc set # H-303-05-120	n/a	n/a	n/a
Skytron 3600	Pad Set, Skytron 3600 Astrus Elite 3" # H-303-05-190	n/a	n/a	n/a
Skytron 6700, 6701	Tbl Pad, 3" # H-303-05-200	Tbl Pad Astrus Elite 4", # H-403-05-200	n/a	n/a
Steris-Amsco 3080, 3085	Astrus Elite 3" # H-303-03-110	Astrus Elite 4", Amsco 3080, 3085 3pc set # H-403-03-110	Std 2", Amsco 3080/3085 3pc set # H-201-03-110	Deluxe 2", Amsco 3080/3085 3pc set # H-202-03-110
Steris Cmax / Steris 4085	Tbl Pad, Astrus Elite 3" # H-303-03-150	Tbl Pad, Astrus Elite 4" # H-403-03-150	n/a	Table Pad, Deluxe 2" Steris C- Max # H-202-03-150

ARM BOARD PADS

Chose OR Table Model
and Pad Set



OR Table Manufacturer / Model Name	Astrus Elite Pad 3" Pad (7.6 cm)	Astrus Elite Pad 4" Pad (10 cm)	Standard Pad 2" Pad (5 cm)	Deluxe Pad 2" Pad (5 cm)
Allen, Steris- Amsco	Astrus Elite 3", Amsco Armboard Surface # H-303-03-950	Astrus Elite 4", Amsco Armboard Pad # H-403-03-950	Std 2", Amsco Armboard Pad # H-201-03-950	Deluxe 2", Amsco Armboard Pad # H-202-03-950

WARRIOR EVACUATION LITTER PAD # H-223-48-223

Dimensions (L x W x H): 72" x 23" x 2" (182 cm x 58 cm x 5 cm)



GYN / URO / LAP



ALLEN STIRRUPS



		Lift Mechanism	Lithotomy Range (From Sterile Field)	Abduction Rang (From Sterile Field)	Lithotomy Indicator	Patient Weight Capacity
Fins (With Lateral Fin)	Allen Ultrafin Stirrups # O-UFAS	Yes	+84, -33	+25, -9	Yes (on lift-assist mechanism)	363 kg (800 lbs)
	Allen Yellofin Elite # O-YFES	Yes	+84, -33	+25, -9	Yes (on lift-assist mechanism)	227 kg (500 lbs)
	Yellofins Apex™ Stirrup Pair # O-YFAX	Yes	+80, -32	+23, 0	Yes (on lift-assist mechanism)	227 kg (500 lbs)
	Allen Yellofin Stirrups with Lift-Assist # O-YFASI	Yes	+84, -33	+25, -9	Yes (on lift-assist mechanism)	159 kg (350 lbs)
	Yellofin Stirrups without Lift-Assist # O-YFSI	No	+90, -35	+25, -9	No	159 kg (350 lbs)
No fins	PAL PRO STIRRUPS (w/o integral clamp) # A-10052	Yes	+90, -22	+25, -9	Yes (on handle)	159 kg (350 lbs)
Pediatric	JUNIOR PAL STIRRUPS # A-10056	No	+90, -35	+25, -9	No	113 kg (250 lbs)
	LITTLE PAL STIRRUP # A-10057	No	+90, -35	+25, -9	No	73 kg (160 lbs)

ALLEN ULTRAFIN STIRRUPS # O-UFAS



Sold in Pairs.

Replacement Pad: # O-AMA65S0.6S Ultrafin Clamshell Pad Set

Requires: 2x Easy Lock Blade Clamp

Option:
A-22000 Allen Safety Drape TM (Case of 10 Pairs) or
O-CVD Clear View Drape, Case of 10



ALLEN YELLOFIN ELITE # O-YFES



Sold in Pairs.

Replacement Pad: # O-AMA68S0.6S Yellofin Reusable Pad Set

Requires: 2x Easy Lock Blade Clamp

Option:
A-22000 Allen Safety Drape TM (Case of 10 Pairs) or
O-CVD Clear View Drape, Case of 10



YELLOFINS APEX STIRRUP PAIR # O-YFAX, # O-YFAX-L, # O-YFAX-R



Sold in Pairs or separately.

O-YFAX Yellofins Apex™ Stirrup Pair
O-YFAX-L Yellofins Apex™ Left Stirrup
O-YFAX-R Yellofins Apex™ Right Stirrup

Replacements:
O-YFAXPAD Yellofins Apex™ Pad Replacements
O-YFAXMSR Yellofins Apex™ Molded Strap Replacement

Requires: 2x Easy Lock Blade Clamp

Option:
A-22000 Allen Safety Drape TM (Case of 10 Pairs) or
O-CVD Clear View Drape, Case of 10



**ALLEN YELLOFIN STIRRUPS WITH LIFT-ASSIST
O-YFASI**



Sold in Pairs.

Replacement Pad: # O-AMA68S0.6S
Yellofin Reusable Pad Set

Requires: 2x Easy Lock Blade Clamp

Option:
A-22000 Allen Safety Drape TM
(Case of 10 Pairs) or
O-CVD Clear View Drape, Case of 10



**JUNIOR PAL STIRRUPS
A-10056**



Sold in Pairs.

Replacement Pad: # A-10058 Junior PAL
Clamshell Pad

Requires: 2x Easy Lock Blade Clamp

Option:
A-22000 Allen Safety Drape TM
(Case of 10 Pairs) or
O-CVD Clear View Drape, Case of 10



**YELLOFIN STIRRUPS WITHOUT LIFT-ASSIST
O-YFSI**



Sold in Pairs.

Replacement Pad: # O-AMA68S0.6S
Yellofin Reusable Pad Set

Requires: 2x Easy Lock Blade Clamp

Option:
A-22000 Allen Safety Drape TM
(Case of 10 Pairs) or
O-CVD Clear View Drape, Case of 10



**LITTLE PAL STIRRUP
A-10057**



Sold in Pairs.

Replacement Pad: # A-10059 Little PAL
Clamshell Pad

Requires: 2x Easy Lock Blade Clamp

Option:
A-22000 Allen Safety Drape TM
(Case of 10 Pairs) or
O-CVD Clear View Drape, Case of 10



**PAL PRO STIRRUPS (W/O INTEGRAL CLAMP)
A-10052**



Sold in Pairs.

Replacement Pad: # A-10028-C FootHugger
Boot Pads

Requires: 2x Easy Lock Blade Clamp

Option:
A-22000 Allen Safety Drape TM
(Case of 10 Pairs) or
O-CVD Clear View Drape, Case of 10



**SIMPLICITY KNEE CRUTCH
O-KCP**



Sold in Pairs. Including strap.

Replacement Pad: # O-KCPP
Replacement Pads for Knee Crutch

Requires: 2x Easy Locket Socket or 2x Tri-Clamp

THE TWISTER # O-LHPCCA



Requires: 2x Easy Lock Socket

Option:

O-TSPP Twister Support Pole Pads, Pair

O-HC Heel Cups, Pair, Twister

O-CCPS Straps for Twister, pair



EASY CATCHER # O-EC51, # O-EC51-EU



Attaches to the rails of a standard OR table. Flexible Band.

Sterile - specify Rail Type:

O-EC51 Easy Catcher, Strl, US Rail (case of 10) - fits US rail

O-EC51-EU Easy Catcher, Strl, EU Rail (case of 10) - fits EU rail

Non-Sterile - specify Rail Type:

O-EC52 Easy Catcher, Non-Sterile - fits US rail

O-EC52-EU Easy Catcher Non-Sterile EU Rail - fits EU rail

URO CATCHER # O-UC4, # F-UC4E



Attaches to the rails of a standard OR table.

Specify Rail Type:

O-UC4 Uro Catcher System, US Rail

F-UC4E Uro Catcher System Eur Rail

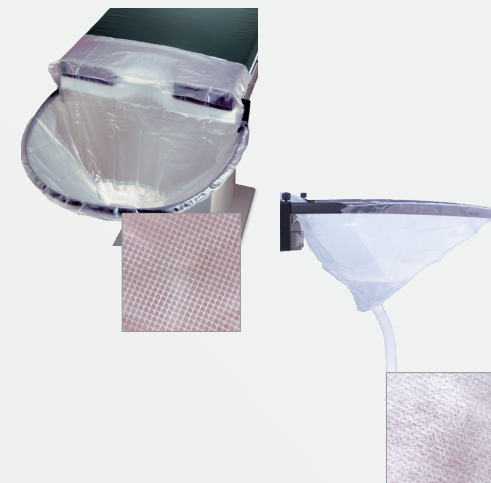
F-UC4UK Uro Catcher System UK Rail

ALLEN STIRRUP CART # A-30015



Holds and transports stirrups or leg holders. Storage bin to store additional accessories.

DRAPES # O-UC31, # O-UC32, # A-50007, # A-50008



Attaches to Uro Catcher system.

O-UC31 Bag, Uro, Sterile, 10 ea

O-UC32 Bag, Uro, Non-Sterile, 10 ea

Open mesh filter allows for drainage of fluids.

Sold In Cases Of 10.

A-50007 Non Sterile Fluidtrap drape (cs 10)

A-50008 Sterile Fluidtrap drape (cs of 10) lot

Ultra-fine mesh trap catches small particles while allowing fluid to drain through.

Sold In Cases Of 10.

ORTHOPEDICS



ALLEN LIFT ASSIST BEACH CHAIR # A-91501

The **Lift-Assist** Beach Chair is designed for use with orthopedic procedures using the Fowler's or beach chair position.

The **Lift-Assist** Beach Chair weighs under 30 lbs (13.6 kg) without the support panels installed.

- Attaches to the rails of standard OR tables
- Rail clamp indicators - display when the Beach Chair is properly installed on the OR table rails
- Removable back panels
- 500 lbs (227 kg) patient weight capacity

Requires: A-91503 (x2), A-90040, A-91502, A-90026, A-90015, A-90023



ALLEN LIFT ASSIST BEACH CHAIR CLAMP # A-91503*

Specify Rail Type
EU # A-91503EU
UK # A-91503UK
JP # A-91503JP
US # A-91503



UNIVERSAL HEAD POSITIONER, NO HANDLES # A-90026

The Universal Head Positioner supports the patient's head and neck. In addition, the disposable straps are comprised of wide soft protective padding. (Sold in Cases of 10.)



ALLEN REUSABLE PAD SET # A-90040



ALLEN UNIVERSAL HEAD RESTRAINT # A-90023



ALLEN INTUBATION PLATE AND PAD # A-91502



BEACH CHAIR COUNTER TRACTION STRAP # A-90015

The Counter-Traction Strap supports the patient while they are in Fowler's position. For use with the Lift-Assist Beach Chair.

ALLEN LIFT ASSIST BEACH CHAIR ACCESSORIES

ALLEN BEACH CHAIR CART # A-90100

Specify Rail Type
EU # A-90100E
JP # A-90100J
US # A-90100



The perfect companion, the Beach Chair Cart conveniently stores the Beach Chair and its accessories. Deep bin affords plenty of extra storing space. Two casters lock for safe and easy loading, unloading and storage.



COUNTER TRACTION BRACE # A-90001

Applied to operative side, the Counter-Traction Brace stabilizes patient for shoulder manipulation. For use with the Lift-Assist Beach Chair.

Requires: Easy Lock Socket

BASIC RECTANGULAR ARM AND HAND TABLE # O-AHTR



The Basic Rectangular Table features a telescoping leg that can be moved in various positions to provide additional support. The table permits access to the surgical site and it attaches to a standard OR table. Includes 1.5" (3.8 cm) pad, for use with 2" (5 cm) OR table pads.

- Weight: 8.8 lbs (4 kg)
- Table Dimensions: 14" x 32" (35.5 cm x 81 cm)
- Patient Weight Capacity: 400 lbs (181 kg)
- Outer Rail Requires US Rail Clamp for Accessories

Replacement Pad: O-AHTP Pad, Arm/Hand Tbl, No Insert

Requires: Easy Lock Blade Clamp

BASIC HOURGLASS TABLE # O-AHTH



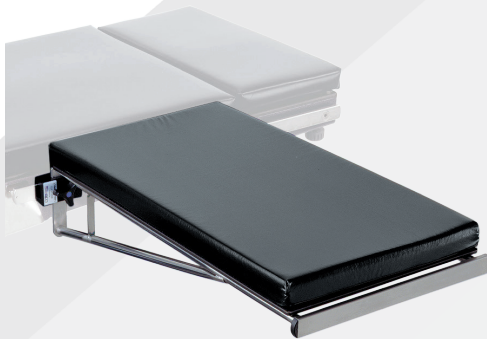
The Basic Hourglass Table features a telescoping leg that can be placed in various positions. The table attaches to a standard OR table and includes a 1.5" (3.8 cm) pad, for use with 2" (5 cm) OR table pads.

- Weight: 11 lbs (5 kg)
- Table Dimensions: 31.375" x 23" Max / 14.75" Min (79.7 x 58.4 cm Max / 37.5 cm Min)
- Patient Weight Capacity: 400 lbs (181 kg)
- Outer Rail Requires US Rail Clamp for Accessories

Replacement Pad: O-AHTHP1.5 Basic Hourglass Table Pad, 1.5"

Requires: 2x Easy Lock Blade Clamp OR 2x Rail Clamp

BASIC CARPA TABLE # O-AHMPT



The Carpa Table is a legless design with a rigid self-bracing frame. It has a 14" x 26" (35.5 x 66 cm) radiolucent top for maximum access and weighs 7.4 lbs (3.4 kg). The perfect choice for carpal tunnel procedures. Easy drop-in rail attachment. Includes 1.5" (3.8 cm) pad, for use with 2" (5 cm) OR table pads.

- Weight: 7.4 lbs (3.4 kg)
- Table Dimensions: 14" x 26" (35.5 cm x 66 cm)
- Patient Weight Capacity: 400 lbs (181 kg)
- Outer Rail Requires US Rail Clamp for Accessories

Replacement Pad: #O-AHMPTP Replacement Pad, Carpa Table 1 1/2"

Requires: 2x Easy Lock Blade Clamp

ALLEN CARBON LIGHTS RECTANGULAR TABLE # A-30450-C



Use without the removable leg when access is paramount. Add the optional leg for those procedures requiring additional stability. Attaches via two round 0.625" (1.6 cm) posts.

- Carbon Fiber
- Weight: Approx. 5.8 lbs (2.6 kg)
- Table Dimensions: 15" x 30.375" (38 cm x 77 cm)
- Patient Weight Capacity: 400 lbs (181 kg)

Requires:

2x Easy Lock Socket

OR 2x A-40015 Universal Accessory Rail Clamp - US only

A-30300-Pad-1 TABLE PAD, 30450-C, 30.5X15X1" - 1" (2.5 cm) Pad

OR # A-30300-Pad 30450-C TABLE PAD, 30.5X15X2" - 2" (5 cm) Pad

Option: #A-30450-LEG Optional Leg for Legless Tables

CARBON LIGHTS HOURGLASS TABLE # A-30650-C



Full-sized carbon fiber hand/arm table that attaches to siderails via integral clamps. Includes integral leg.

- Weight: Approx. 9.2 lbs (4.2 kg)
- Dimensions (LxW): 34" x 16" (863.6 mm x 406.4 mm)
- Fits EU & US Rails Only
- # A-30650ER Elbow Rest included
- Weight capacity: 400 lbs (181 kg)

Requires:

A-30502-1-B 1" Pad Set for 30650-C, With Elbow - 1" (2.5 cm) Pad

OR # A-30502-B 2" Pad Set for 30650-C, With Elbow - 2" (5 cm) Pad

Pad sets include table pad and two elbow rest pads # A-30530-1

CARBON LIGHTS™ MINOR PROCEDURE TABLE # A-30410-C



This lightweight table works for procedures such as carpal tunnel releases and AV fistulas. Has two round .625" (1.6 cm) posts.

- Carbon Fiber
- Weight: Approx. 3.4 lbs (1.5 kg)
- Table Dimensions: 24" x 15" (61 cm x 38 cm)
- Patient Weight Capacity: 400 lbs (181 kg)

Requires:

2x Easy Lock Socket

OR 2x A-40015 Universal Accessory Rail Clamp - US only

A-30410-Pad1 TABLE PAD FOR 30410 1" - 1" (2.5 cm) Pad OR

A-30410-Pad TABLE PAD FOR 30410 2" - 2" (5 cm) Pad

Option: #A-30450-LEG Optional Leg for Legless Tables

SCHLEIN HAND POSITIONER # A-20750



Supports multiple hand positions. System can be used with or without weights. Autoclavable. Rail Attachment included.

Requires: Sterile Mesh Finger Trap Disposables

ALLEN WRIST ARTHROSCOPY TOWER SYSTEM # R-734-10



The table mounted Wrist Arthroscopy System used for distraction of the hand, wrist, forearm and elbow. Autoclavable.

- Tension adjustments up to 40 lbs (18 kg)
- Counter traction device eliminates need for hanging weights

Requires: Simple Clamp and Sterile Mesh Finger Trap Disposables

THE EQUALIZER # R-734-05



This stainless steel chain and pulley system is fully autoclavable and comes with an attaching clip. The Equalizer can also be used with the Wrist Fracture System and Weightless Shoulder Suspension System.

Requires: Sterile Mesh Finger Trap Disposables

STERILE MESH FINGER TRAP DISPOSABLES

Sold in Cases of 8.

- Extra Large
- Large
- Medium
- Small
- Pediatric

Singles

- # A-30522-8 Trap, Finger, Single, Extra Large
- # A-30522-2 Trap, Finger, Single, Large
- # A-30522-4 Trap, Finger, Single, Medium
- # A-30522-5 Trap, Finger, Single, Small
- # A-30522-9 Trap, Finger, Single, Pediatric

Doubles

- # A-30522-7 Trap, Finger, Double, Extra Large
- # A-30522-1 Trap, Finger, Double, Large
- # A-30522-3 Trap, Finger, Double, Medium
- # A-30522-6 Trap, Finger, Double, Small

WEIGHTLESS SHOULDER SUSPENSION SYSTEM # R-644-36



The Weightless Shoulder Suspension System allows for approximate traction settings up to 40 lbs (18.2 kg) with a simple turn of the tension adjustment knob. Boom arm adjusts from 0° to 90°. The boom head swivels so that its pulley always aligns properly with the cord. The system folds down for easy storage.

Requires: Simple Clamp and # A-21200

ARM TRACTION DEVICE # A-20500



Accommodates intraoperative traction up to 40 lbs (18.2 kg) for shoulder procedures.

Requires: Simple Clamp and # A-21200

ARM TRAPS, STERILE # A-21200



Made of soft plastic mesh, the Sterile Arm Trap holds the arm. Arm trap is affixed to patient with COFLEX NL Self-Adherent Wrap (roll included). Rope loop at the top of the trap allows for easy attachment to many types of traction and suspension devices.

Sold in Cases of 6.

TOTAL KNEE STABILIZER # 0-TKS



A convenient device to support the flexed leg during total knee procedures. The Total Knee Stabilizer mounts to the table rail. The 10" long by 2" diameter (25.4 cm x 5 cm) foot support is covered with a soft, replaceable closed-cell foam pad. The 13" (33 cm) long mounting bar permits vertical height adjustment while the flat 0.25" x 1" (0.6 cm x 2.5 cm) cross section prevents unwanted rotation.

Replacement Pad: 0-TKSP Total Knee Stabilizer Pad

Requires: Easy Lock Socket and # 0-TKSP



THE PREPPER # 0-LPS



Padded cradle comfortably supports patient's leg during prep procedure. Shaft can be rotated. Post is 30.5" (77.5 cm) long.

Replacement Pad: 0-LPSP Pad, Replacement, LPS

Requires: Easy Lock Socket and # 0-LPSP



MEDICAL SYSS ARTHROSCOPIC STRESS POST # 0-ASP



A levering fulcrum for access to the medial compartment of the knee. The 3" x 8" (7.6 cm x 20 cm) post surface is covered with a 1" (2.5 cm) thick, soft pad.

Requires: Easy Lock Socket

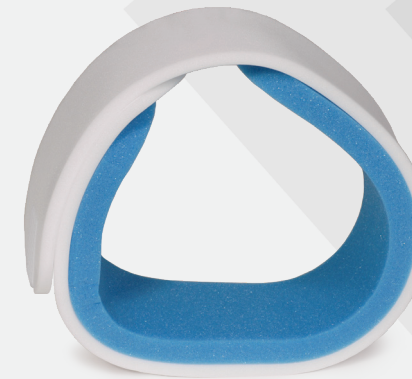
ARTHROSCOPIC LEG HOLDER NO CLAMP # A-10015



The locking mechanism enables the caregiver to set rigid fixation with one hand operation. The hinged upper brace accommodates holds legs up to 35" (89 cm) in circumference.

Requires: Easy Lock Socket and # R-S4133-V

LEG HOLDER PAD: RONCI (BOXED\NON STRL) # R-S4133-V



The Leg Holder Disposable Pads utilize two special foam materials which are laminated together. The leg pad secures with simple VELCRO fasteners. Length is 37.75" (95.9 cm) and width is 3.375" (8.6 cm).

Sold in Cases of 12.

ALLEN ARTHROSCOPIC WELL LEG HOLDER # 0-AWLH



To position the non-affected leg during arthroscopic knee procedures. Leg holder and boot pad included.

Replacement pad:

0-S1007A0.6S Arthroscopic Well LegHolder Bootpad

0-AMA62S0.6S Clamshell Boot Pad

Requires: Easy Lock Socket



ALLEN TRACTION BOOT

ACTIVE HEEL TECHNOLOGY PROVIDES SUPERB SECURITY TO HELP PREVENT FOOT SLIP.

Positioning the leg and foot properly during trauma and hip fracture cases is critical to a less stressful surgery and successful outcome. Many hospitals are still using the original boots that may be decades old and require copious amount of tape to help secure the foot. To mitigate these challenges, we have introduced the Traction Boot with Active Heel Technology.

- Accommodates foot from sizes 5 (female) to 14 (male)
- Universal: One boot fits left or right foot.
- Retrofits your existing Steris, Maquet and Schaerer traction tables.
- Patient Weight Capacity: 500 lbs (227 kg)

Requires: A-93001 Allen Traction Boot Disposable



ALLEN TRACTION BOOT
A-93000

Requires: A-93002 Allen Traction Boot Clamp



ALLEN TRACTION BOOT - MODULAR
A-93005

Requires: A-93006 ATB-Modular Attach for Steris Systems



ALLEN TRACTION BOOT CLAMP
A-93002



ATB- MODULAR ATTACH FOR STERIS SYSTEMS
A-93006

ALLEN TRACTION BOOT DISPOSABLE # A-93001



Disposable.

Sold in Cases of 6

SPINE



ALLEN ADVANCE TABLE

A-71100-CA, # A-71100-US, # A-71101-AUS,
A-71101-EU, # A-71101-IND, # A-71101-SA,
A-71101-SCH, #A-71101-SK, # A-71101-UK,
A-71102-JP

A Solution For Spine Surgical Procedures

ONE BASE, MULTIPLE OPTIONS

180° Patient Rotation



90° Patient Rotation



One Base: Pinned and/or Pinless



COMPATIBLE WITH ALLEN ADVANCE TABLETOPS

ADVANCE RAIL TOP
A-71400



Requires: Various accessories
See page 46 to 52

ADVANCE FLAT TOP
A-71410



Requires: # A-70436 Allen
Advance Flat Top Pad

ADVANCE LATERAL TOP
A-71701



Requires:

- # A-71703
Advance Lateral Pad
- # A-71706
Advance Lateral Draw Sheet
- # A-71702-L
Advance Lateral Bracket
- # A-71702-P
Advance Prone Bracket
- # A-71704
Advance Lateral Air Bladder

See page 42

ALLEN ADVANCE TABLE SET-UP

PIN SET-UP



The Advance Standard H-Bracket is used to connect Allen Advance Tabletops to the Allen Advance Table.



Advance Safe-H Bracket
A-71402
Requires 4



Advance Pin
A-71401
Requires 8



Advance Cervical Traction Bar
A-71404

PINLESS SET-UP



The Pinless H-Bracket design eliminates the extra steps of utilizing the cross-pins for securing the patient support top to the Allen Advance Table base.



Allen Advance Pinless H-Bracket
A-71416

Requires 2 for normal orientation
Requires 4 for flipping

Not compatible with # A-71701
Advance Lateral Top.



Advance Cervical Device
A-71417

GENERAL ACCESSORIES



Advance Safety Straps
A-71411



Advance Table Accessory Cart
A-71600



Advance Pendant
A-71403

Required for # A-71400 Advance Rail
Top and # A-71410 Advance Flat Top



Advance Pendant Lateral to Prone
A-71413

Required for A-71701 Advance Lateral
Top

ALLEN ADVANCE TABLE SET-UP

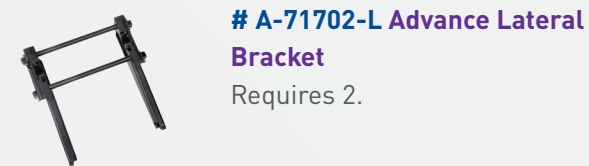


Only compatible with tables with auxiliary power port.

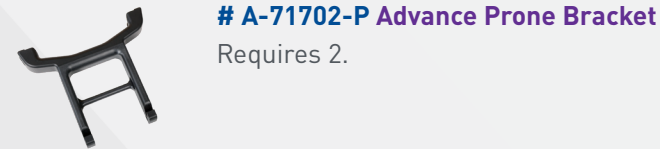
The Advance Table L2P Platform can be used with the Allen Advance Table to provide a flexing, lateral surgical patient support platform. Integrated air bladder for additional patient flex.



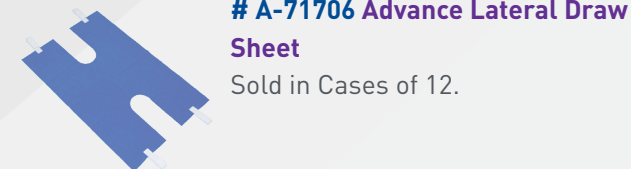
Requires:
A-71701 Advance Lateral Top
A-71703 Advance Lateral Pad



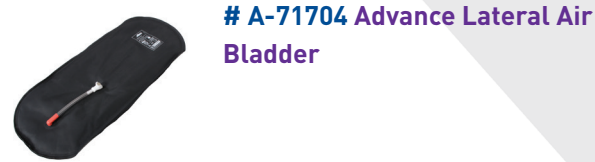
A-71702-L Advance Lateral Bracket
 Requires 2.



A-71702-P Advance Prone Bracket
 Requires 2.



A-71706 Advance Lateral Draw Sheet
 Sold in Cases of 12.



A-71704 Advance Lateral Air Bladder

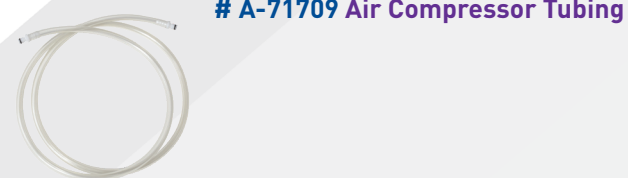


Advance Lateral Air Compressor – Specify Country

A-71705-EU Advance Lateral Air Compressor

A-71705-US Advance Lateral Air Compressor

A-71705-UK Advance Lateral Air Compressor



A-71709 Air Compressor Tubing

Optional accessories:
A-71708-1 Left Offset Accessory Rail Clamp
A-71708-2 Offset Accessory Rail - Right



ALLEN FLEX FRAME # A-70100



The Allen Spine System is an extension for your standard OR table that enables you to perform spine surgery.

Requires: Flex Frame OR Table Clamp Set
 Specify Rail Type:

A-70510 Flex Frame OR Table Clamp Set, US

A-70510-EU Flex Frame OR Table Clamp Set, EU

A-70510-JP Flex Frame OR Table Clamp Set, JP

A-70510-UK Flex Frame OR Table Clamp Set, UK

ALLEN AP-VANTAGE TABLE ADAPTOR # A-70115

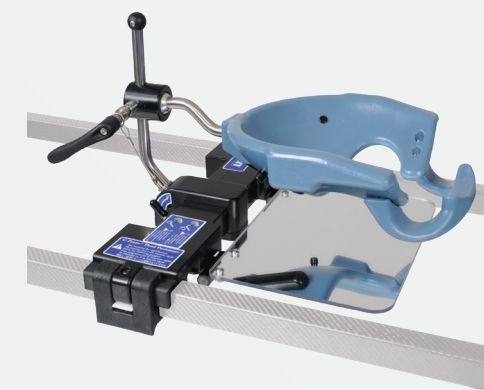


The Allen AP-Vantage Table Adaptor is an extension for your standard OR table that enables you to perform cervical spine surgery.

Requires:
 C-Flex Head Positioning System
A-70116 Allen AP-Vantage Adjustable Leg
A-70117 AP Vantage Traction Bar



ALLEN C-PRONE HEAD POSITIONER # A-70300



The C-Prone Head Positioner can be used to position the head during spine surgery. Can be attached to Allen Advance Table or Allen Flex Frame.

Requires:
A-70310 Allen Comfort Mask Disposable (Box of 5)
 Single Use. Sold in Cases of 5.

C-FLEX POLAR HEAD POSITIONER- DEVICE ONLY # A-70701



The modular system can be used to position the head during spine surgery.
Skull clamps can be attached using adapters.
Can be attached to Allen Advance Table or Allen Flex Frame.

Requires:

A-70715 Allen C-Flex Prone Face Mask Head Module

A-70720 Allen C-Flex Flat Plate Head Module

A-70310 Allen Comfort Mask Disposable (Box of 5)

A-70702 Allen C-Flex Clean Cape (Box of 10)

Various Starburst Adapters.

C-FLEX ACCESSORIES



Allen C-Flex Prone Face Mask Head Module

A-70715

Requires:

A-70310 Allen Comfort Mask Disposable(Box of 5)

Single Use. Sold in Cases of 5.



Allen C-Flex Flat Plate Head Module

A-70720

Requires: **# A-70862** Allen Foam Head Blocks



Allen C-Flex Clean Cape (Box of 10)

A-70702

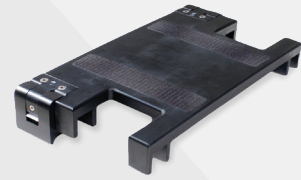
Single use. Sold in Cases of 10.



SPECIFY BRAND OF SKULL CLAMP OR HORSESHOE HEADREST:

		DORO	Mayfield
Starburst Adaptor for Standard Products		Allen Standard Starburst, Mayfield/Doro # A-70710	
Reverse Starburst Adaptor for Standard products		Allen Reverse Starburst, Mayfield/Doro # A-70725	
45° Starburst Adaptor for Standard products		45° Standard Starburst, Mayfield/Doro # A-70118	
Starburst Adaptor for Radiolucent products		Standard Starburst, Radiolucent Doro # A-70740	Std Starburst, Radiolucent Mayfield # A-70730
Reverse Starburst Adaptor for Radiolucent products		Reverse Starburst, Radiolucent Doro # A-70745	Reverse Starburst, Radiolucent Mayfield # A-70735
45° Starburst Adaptor for Radiolucent products		45° Std Starburst, Radiolucent Doro # A-70755	45° Std Starburst, Radioluc Mayfield # A-70750

ALLEN SPINE ACCESSORIES



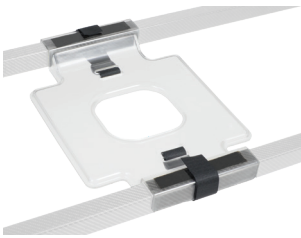
Allen Supine Access Top, 12"
A-70404

Requires:
A-70434 Supine 12" Access Top Sect Pad 2" Astrus – 5 cm
A-70435 Supine 12" Access Top Sect Pad 3" Astrus – 7.6 cm



Allen Supine Filler Top 8"
A-70403

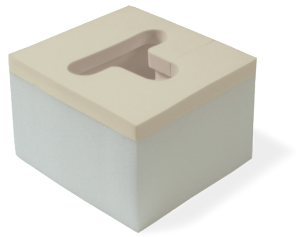
Requires:
F-70432 8" Supine Filler Top Pad 2" – 5 cm



Advance Head Plate
A-71316

For positioning patient's head in prone position.

Requires:
A-70862 Allen Foam Head Blocks
 Single use.
 Sold in Cases of 6. 6 blocks per Case.



Allen Advance Chest Support w/pad
A-71301

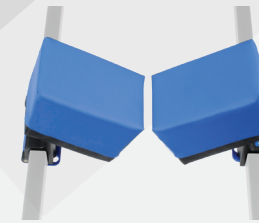
Replacement Pad: # A-71302 Advance Chest Support Replacement Pad



Allen Advance Hip Support - SM w/pad
A-71303

Replacement Pad: # A-71304 Advance Hip Support Replacement Pad- SM

Requires: **# A-71261 Allen Ultra Comfort Covers, Small**
 Single use. Sold in Cases of 6.



Allen Advance Hip Support - MED w/pad
A-71305

Replacement Pad: # A-71306 Adv Hip Support Replacement Pad- MED

Requires: **# A-71262 Allen Ultra Comfort Covers, Medium**
 Single use. Sold in Cases of 6.



Allen Advance Hip Support - LG w/pad
A-71307

Replacement Pad: # A-71308 Advance Hip Support Replacement Pad- LG

Requires: **# A-71263 Allen Ultra Comfort Covers, Large**
 Single use. Sold in Cases of 6.



Advance Thigh Support w/pad - left
A-71309

Replacement Pad: # A-71310 Advance Thigh Support Replacement Pad

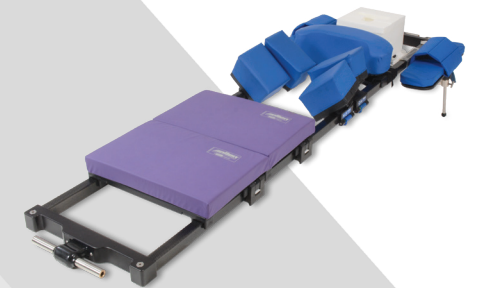
Requires: Allen Ultra Comfort Covers



Allen Advance Thigh Support w/pad- right
A-71311

Replacement Pad: # A-71310 Advance Thigh Support Replacement Pad

Requires: Allen Ultra Comfort Covers



Allen Ultra Comfort Covers
A-71261, # A-71262, # A-71263

Single use. Sold in Cases of 6.
 Choose size depending on size of Hip Support pads.

A-71261 Allen Ultra Comfort Covers, Small
A-71262 Allen Ultra Comfort Covers, Medium
A-71263 Allen Ultra Comfort Covers, Large

ALLEN SPINE ACCESSORIES



Allen Wing Set System
A-70200

Replacement Pad: # A-70220 Allen Wing Set Replacement Pad - Pad Set

Requires:

A-70260 Comfort Covers (case of 5 sets of 4)

Single use. Sold in Cases of 5.

4 covers included per set.



Allen Contour
A-70270

Requires:

A-70271 Contour Cover Kit

Single use. Sold in Cases of 5.



Allen Pediatric Wing Set
A-70202

Replacement Pad:

A-70221 Wing Set Replacement Pad- Pedi Pad Set

Requires:

A-70260 Comfort Covers (case of 5 sets of 4)

Single use. Sold in Cases of 5.

4 covers included per set.



ALLEN SPINE ACCESSORIES



Allen Advance Sling Support
A-71312

For positioning patient's legs in prone position.



Allen Advance Pillow
A-71313, A-71314

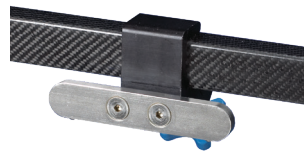
Choose size:

A-71313 Allen Advance Pillow - Queen Size

Dimensions: 28.5" x 15.5" x 6" (72.4cm x 39.4cm x 15.25cm)

A-71314 Allen Advance Pillow - Standard Size

Dimensions: 24.5" x 15.5" x 6" (62.2cm x 39.4cm x 15.2cm)



Allen Flex Frame Accessory Rail, 6"

A-70501, # A-70501-EU, # A-70501-JP, # A-70501-UK

To attach accessories to the Carbon frame. Length of rail is 6" (15.2 cm).

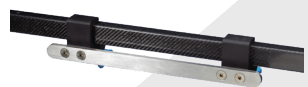
Specify Rail Type:

A-70501 Allen Flex Frame Accessory Rail, 6", US

A-70501-EU Allen Flex Frame Accessory Rail, 6", EU

A-70501-JP Allen Flex Frame Accessory Rail, 6", JP

A-70501-UK Allen Flex Frame Accessory Rail, 6", UK



Allen Flex Frame Accessory Rail, 17"

A-70502, # A-70502-EU, # A-70502-JP, # A-70502-UK

To attach accessories to the Carbon frame. Length of rail is 17" (43.2 cm).

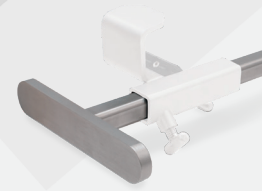
Specify Rail Type:

A-70502 Allen Flex Frame Accessory Rail, 17", US

A-70502-EU Allen Flex Frame Accessory Rail, 17", EU

A-70502-JP Allen Flex Frame Accessory Rail, 17", JP

A-70502-UK Allen Flex Frame Accessory Rail, 17", UK



Adjustable Accessory Rail
A-71501-EU, A-71501-US

To attach accessories to the Carbon frame. Length of rail is 6" (15.2 cm).

Specify Rail Type:

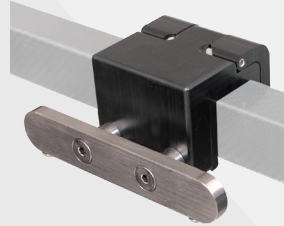
A-71501-EU Adjustable Accessory Rail

A-71501-US Adjustable Accessory Rail - US



Requires: **# A-71502 Adjustable Accessory Rail Clamp**

ALLEN SPINE ACCESSORIES



Allen Armboard Rail
A-70500, A-70500-EU, A-70500-JP, A-70500-UK

To attach Armboards* to the Carbon frame.
* See Chapter "General Accessories".

Specify Rail Type:
A-70500 Allen Armboard Rail - US
A-70500-EU Allen Armboard Rail, EU
A-70500-JP Allen Armboard Rail, JP
A-70500-UK Allen Armboard Rail, UK



Articulating Arm Support
A-71319

Requires:
A-71318 Articulating Arm Support Clamp OR
A-71320 Long Articulating Arm Support Clamp

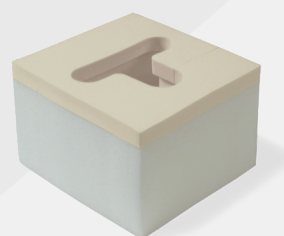


Replacement Pad: # A-71321 Articulating Arm Support Replacement Pad



Allen Foam Block Stand
A-70825

Used in collaboration with a Foam Head Block to support a patient's head. The cutout and mirror allow anesthesiologists to be able to view the eyes and airway during a procedure.



Requires:
A-70862 Allen Foam Head Blocks
Single use.
Sold in Cases of 6. 6 blocks per Case.

ALLEN BOW FRAME # A-70801



Attaches to a standard OR table, the Allen Advance Table and the Allen Flex Frame. Allows the surgeon to perform less complex spine surgeries.

Requires:
A-70821 Bow Frame Crank Handle

Replacement Pads*:
A-70820 Bow Frame Replacement Pads
Pad Part No.: P008429XASX0
A-70822 New Bow Frame Replacement Pads
Pad Part No.: P005496XASX0

*To identify correct replacement pad type, please refer to the pad part number on the underside of the pad.

ALLEN BOW FRAME ACCESSORIES



Allen Bow Frame Standard Care Covers
A-70805

Each set includes foam head support, two arm supports, frame cover, rod support covers and body support covers. Single use.
Sold in Cases of 6 sets.



Allen Bow Frame Skin Care Covers
A-70810

Each set includes foam head support, two arm supports, frame cover, rod support cover and body support covers. Single use.
Sold in Cases of 6 sets.



Bow Frame Skin Care Kit-Covers
A-70810C

Each set includes frame cover, rod support cover and body support covers. Single use.
Sold in Cases of 6 sets.



Allen Bow Frame Cart
A-70815, # A-70815-JP, # F-70815-EU, # F-70815-UK

The Bow Frame Cart stores the Bow Frame and other accessories.

Specify Rail Type:
A-70815 Allen Bow Frame Cart
A-70815-JP Allen Bow Frame Cart, JP
F-70815-EU Radiolucent Spine Surgery Frame Cart, EU
F-70815-UK Radiolucent Spine Surgery Frame Cart, UK

4-POST # A-70207



Attaches to a standard OR table via short or long attachment straps. Allows the surgeon to place patients in a prone or lateral spine position.

Requires:

- 4x **# A-70208 4-Post Replacement Straps – Long** OR
- 4x **# A-70209 4-Post Replacement Straps - Short**



Allen Pediatric Wing Set # A-70202

Requires:

- # A-70260 Comfort Covers (case of 5 sets of 4)**
- Single use. Sold in Cases of 5.
4 covers included per set.

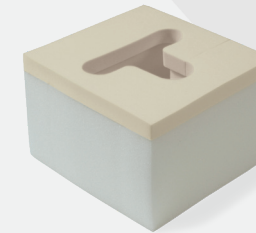


Allen Foam Block Stand # A-70825

Used in collaboration with a Foam Head Block to support a patient's head. The cutout and mirror allow anesthesiologists to be able to view the eyes and airway during a procedure.

Requires:

- # A-70862 Allen Foam Head Blocks**
- Single use.
Sold in Cases of 6. 6 blocks per Case.



4-POST ACCESSORIES

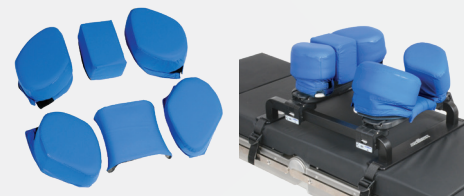


Allen Wing Set System # A-70200

Replacement Pad: **# A-70220 Allen Wing Set Replacement Pad - Pad Set**

Requires:

- # A-70260 Comfort Covers (case of 5 sets of 4)**
- Single use. Sold in Cases of 5.
4 covers included per set.



Allen Contour # A-70270

Requires:

- # A-70271 Contour Cover Kit**
- Single use. Sold in Cases of 5.

The Baxter logo is displayed in a bold, italicized, blue sans-serif font. The background of the entire page features a pattern of overlapping, semi-transparent geometric shapes in various shades of light blue and teal, creating a modern, abstract design.

Baxter

Contact your Baxter representative or visit [baxter.com](https://www.baxter.com) to learn more.

[baxter.com](https://www.baxter.com)

Baxter and Hillrom are trademarks of Baxter International, Inc. or its subsidiaries.
GBU-CS43-240001 (v1.0) 06/2024